



DECKMATE SERIES SKIMMERS

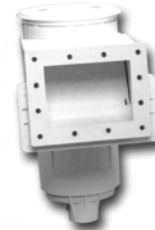
Gunite/Vinyl Liner Pools

Features

- **Flapper style weir** for high velocity skimming action from 10-55 gpm.
- **Largest strainer basket in the industry** for maximum debris collection with brass basket handle for durability.
- **Built-in rebar/tie-wire channels** to aid in mounting and locating of skimmer during construction.
- **Available with double 1-1/2" or 2" threaded or slip bottom connections.**
- **Available in standard or wide mouth configurations for vinyl pools.**
- **Rugged ABS construction** with structural ribs for extra durability.



Concrete



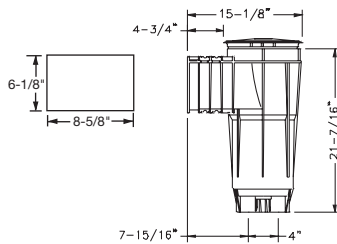
Vinyl



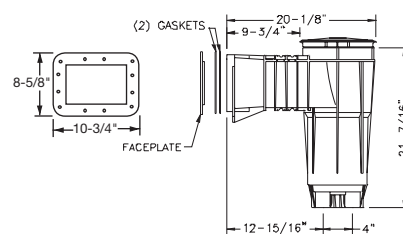
Vinyl Wide

- **Spacers included to accommodate steel wall pools.**
- **Adjustable grout ring** accommodates varied deck thickness. Grout rings may be stacked for maximum variation.
- **Standard industry bolt pattern** on vinyl standard and vinyl wide-mouth.

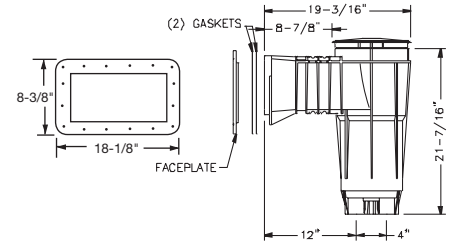
Dimensions



Concrete



Vinyl



Vinyl Wide

Ordering Information

CONCRETE

VINYL STD.

VINYL WIDE

PORT DIMENSIONS	MODEL NO.	ORDER NO.	MODEL NO.	ORDER NO.	MODEL NO.	ORDER NO.
1-1/2"/2" SLIP	DMG-15S/2S	9411-0145	DMV-15S/2S	9411-0152	DMVW-15S/2S	9411-0160
1-1/2"/2" THRD	DMG-15T/2T	9411-0111	DMV-15T/2T	9411-0129	DMVW-15T/2T	9411-0137

Note: All DeckMate skimmers are molded w/ 2" port dimensions. 2" x 2-1/2" reducer bushings are included w/ all models.

ACCESSORIES

Order No.	Description
9411-0020-R	Vacuum plate
9411-0038-R	Float valve
43-3055-07-R	Stackable grout ring
14-4345-06-R18	Long screw kit for polymer fiberglass and wood wall vinyl lined pools (18/bag)

Note: For parts, see pages 115 & 116.